

The Impact of Eligibility Standards in Five Upstate New York Counties: *Suffolk County Addendum*

Andrew Davies, Ph.D., Director of Research
Alyssa Clark, M.A., Research Analyst

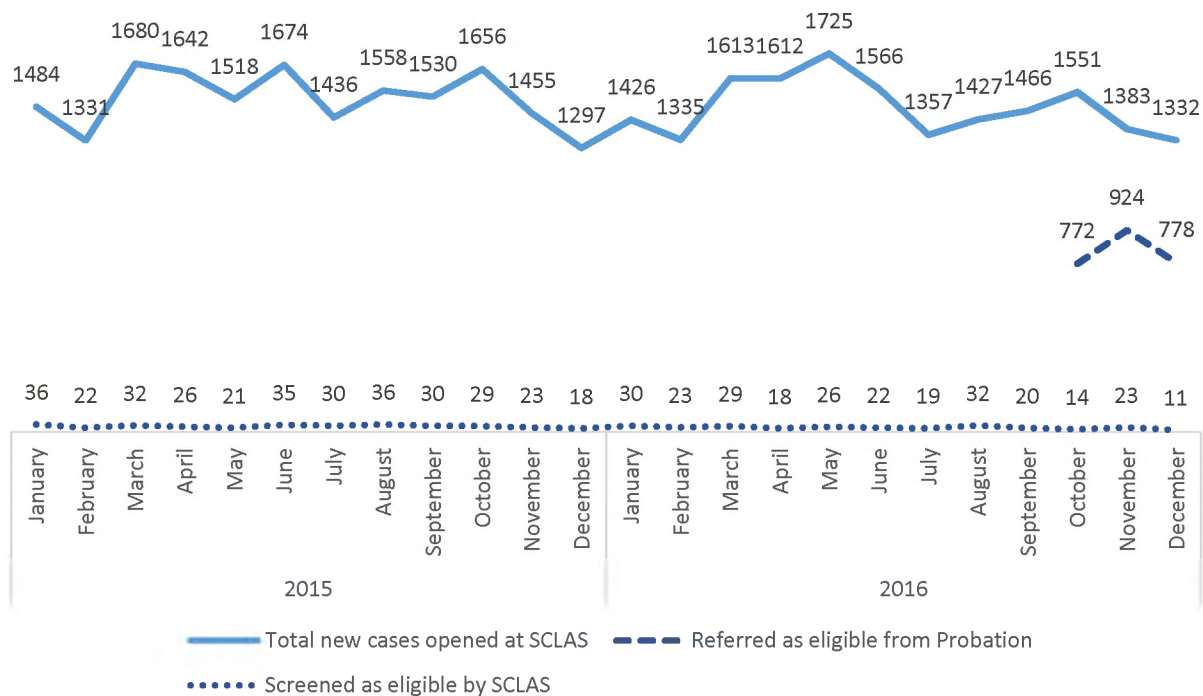
March 2017

In February, 2017, Suffolk County Legal Aid Society (SCLAS) supplied additional data that were not received in time for inclusion in our report *The Impact of Eligibility Standards in Five Upstate New York Counties*.¹ In the interest of completeness, we present these data here.

The data are the total numbers of new cases opened at SCLAS each month in 2015 and 2016. Although they do not mirror the data presented for other counties in the report (on application and denial rates for counsel) they do allow us to assess whether the rate at which new cases were opened after the September 1 implementation date of the *Criteria and Procedures* increased or decreased in comparison to prior months. We find that the number actually decreased (see Table 1, column 1).

For context, we have graphed these new data alongside the numbers of persons referred for representation by the Suffolk County Probation Department, and the numbers accepted pursuant to SCLAS' own screening process in East End courts (see Figures 1 and 2). Although it is possible these data aren't counted in exactly the same way, the juxtaposition provides suggestive evidence of the proportion of cases that reach SCLAS from Probation, internal screening, and a judicial decision on eligibility, respectively.

Figure 1: Total Numbers of Cases Opened at SCLAS, and Eligible Persons Referred, 2015-2016²



¹ This report can be found here: <https://www.ils.ny.gov/files/Hurrell-Harring/Eligibility/Research/The%20Impact%20of%20Eligibility%20Standards%20in%20Five%20Upstate%20New%20York%20Counties%20-%20ILS%20report%20January%202017.pdf>.

² Probation data are not always for precise months: October data are for Oct 3-28; November data are for Oct 29-Nov 30; December data are for Dec 1-31. 'Screened as eligible by SCLAS' data end on December 8.

Figure 2: New Cases Opened Per Day and Eligible Persons Referred Per Day, SCLAS 2015-2016³

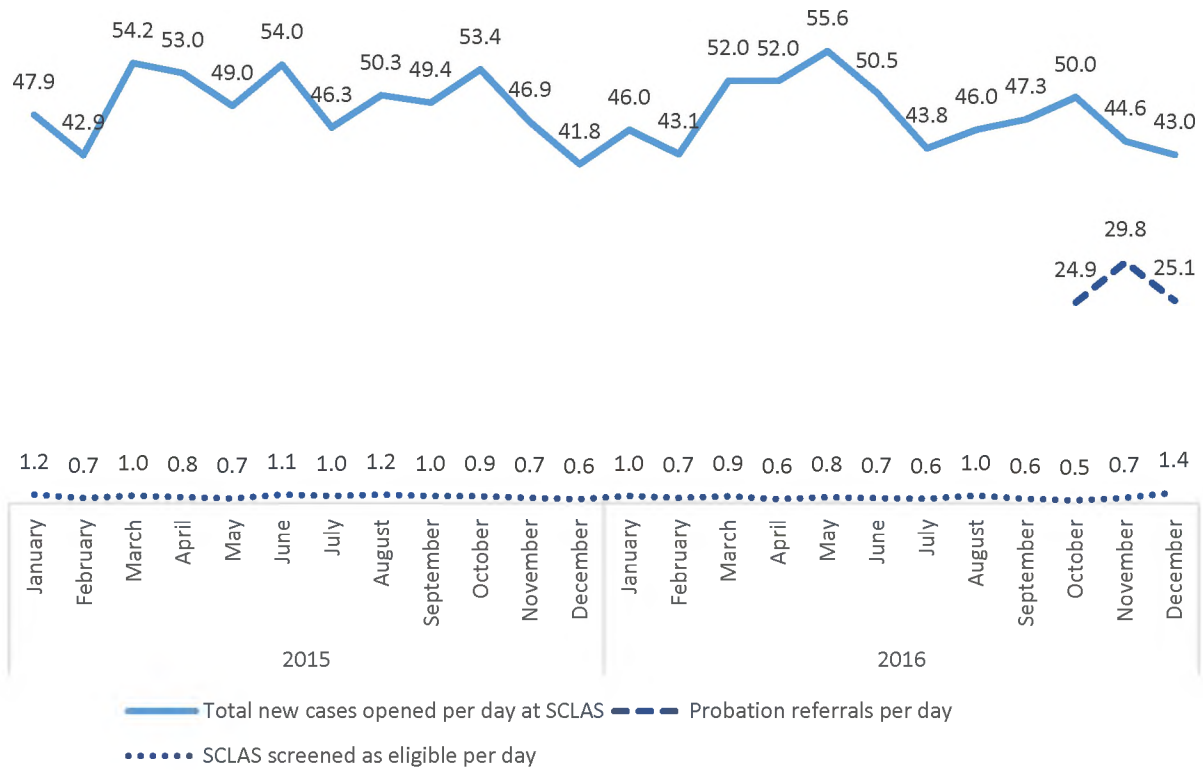


Table 1: New Cases Opened Per Day and Eligible Persons Referred Per Day, Selected Periods

Period	Total new cases opened per day at SCLAS	Probation referrals per day	SCLAS screened as eligible per day
2015	50.03	--	0.93
2016 to August 31	49.43	--	0.82
2016 September 1 to end	46.98 ⁴	26.89 ⁵	0.69 ⁶

³ Caveats to Figure 1 found at Note 1, *supra*, apply to Figure 2 also.

⁴ End data for Total new cases opened per day at SCLAS is December 31.

⁵ Beginning data for Probation referrals per day is October 3.

⁶ End date for SCLAS screened as eligible per day is December 8.